

## PUBLIC EXHIBITION

### Five Dock Streetscape Upgrade - Stage Two Concept Plan

The City of Canada Bay is committed to improving and maintaining our town centres and villages.

Vibrant town centres contribute to the social and economic wellbeing of our communities. We are supporting our community and local businesses by planning for Stage Two of the Five Dock streetscape upgrade (Queens Road to Henry Street). The Stage One works along Great North Road between Lyons Road and Henry Street concluded in mid-2017.

In 2015, Council undertook community consultation on the Five Dock Streetscape Concept Plan. Over the past year, Council has reviewed and undertaken amendments to the original concept plan.

**The revised Stage Two Concept Plan is on public exhibition from Saturday, 1 September to Friday, 28 September 2018.**

#### What is proposed?

The streetscape upgrade is an outcome of the Five Dock Urban Design Study, Council's and the community's 20-year vision for the Five Dock Town Centre.

The revised Stage Two Concept Plan outcomes include:

- Planting of street trees and shrubs
- Installation of high quality pavements and street furnishings
- Improvements to the drainage system.

#### What are the community benefits of the streetscape upgrade?

Streetscape upgrades provide real benefits to local businesses and residents through:

- Improving the public amenity which makes the centre a more attractive precinct to visit
- Implementing a streetscape design which focuses on pedestrian safety through slowing down vehicles
- Enhancing the environmental, social and cultural sustainability of the place
- Retaining and attracting businesses and residents.

#### What are the key amendments to the 2015 Concept Plans?

##### Soft Landscaping

- Additional trees and low planting on both sides of Ramsay Road

- Changes to proposed tree locations on Great North Road due to conflicts with traffic signals and building awnings.

##### Street Furniture

- Addition of pre-cast concrete seating at new and existing street trees.

##### Footpath

- Surface treatments changed to align with those used in Stage One.

##### Parking

- Previously proposed kerb extension on the southern side of Kings Road and in Garfield Street has been removed to reduce parking loss
- Previously proposed kerb extension on the northern side of First Avenue has been shortened to reduce parking loss.

##### Pedestrian Crossings

- Previously proposed pedestrian crossing in Garfield Street has been removed due to RMS requirements
- Modifications of the crossing at Fred Kelly Place and the extension of the southern median island have been removed due to RMS requirements.

#### When will construction commence and how long will it go for?

It is anticipated construction will commence in early 2019 with completion expected within one year of the commencement date.

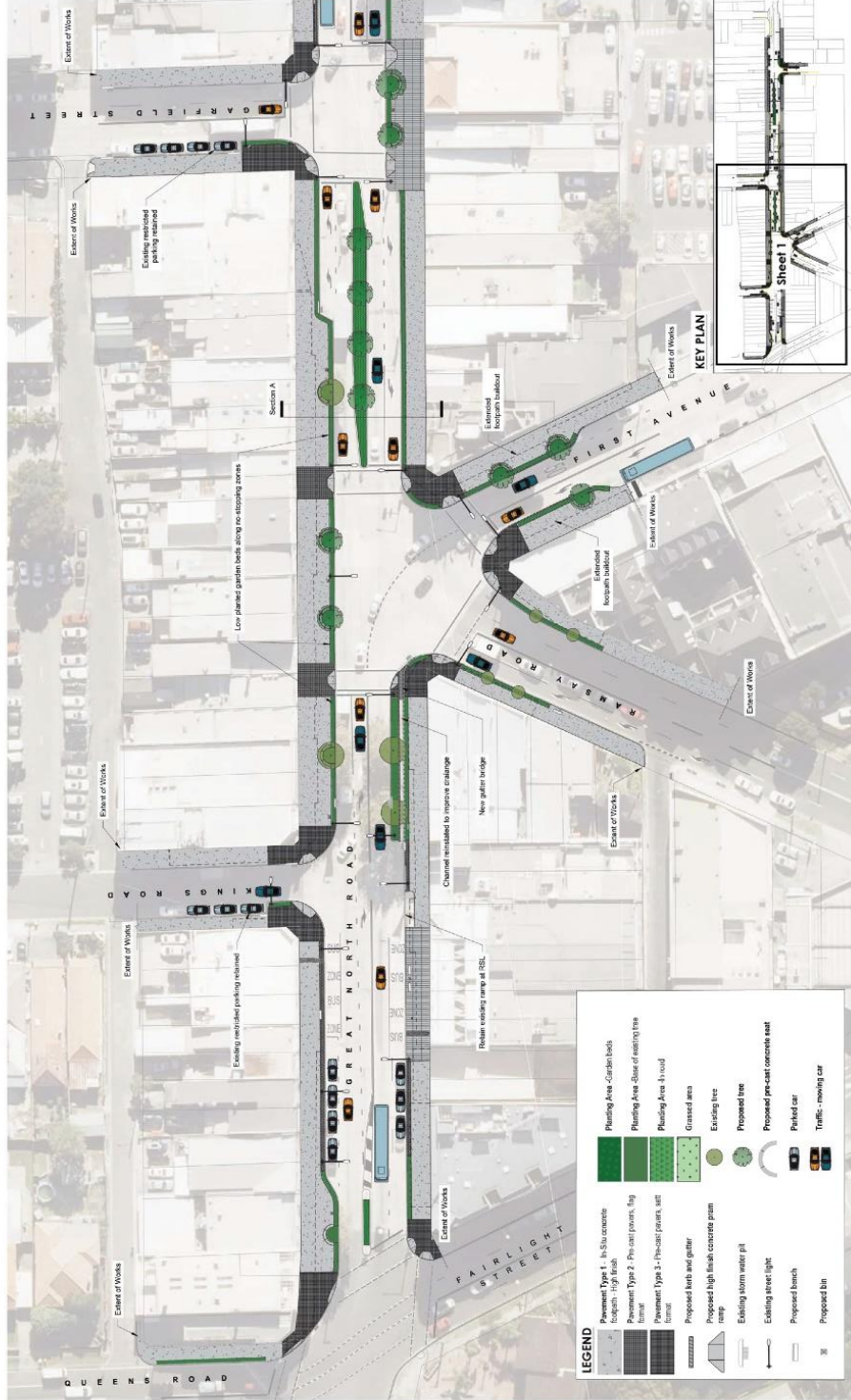
#### How is this project being funded and what is the anticipated cost?

The works are funded from developer contributions. Stage Two is anticipated to cost approximately \$3.35 million.

#### How can I provide my feedback on the revised concept plan?

Council encourages community members to review the revised concept plan and provide feedback from Saturday, 1 September to Friday, 28 September 2018.

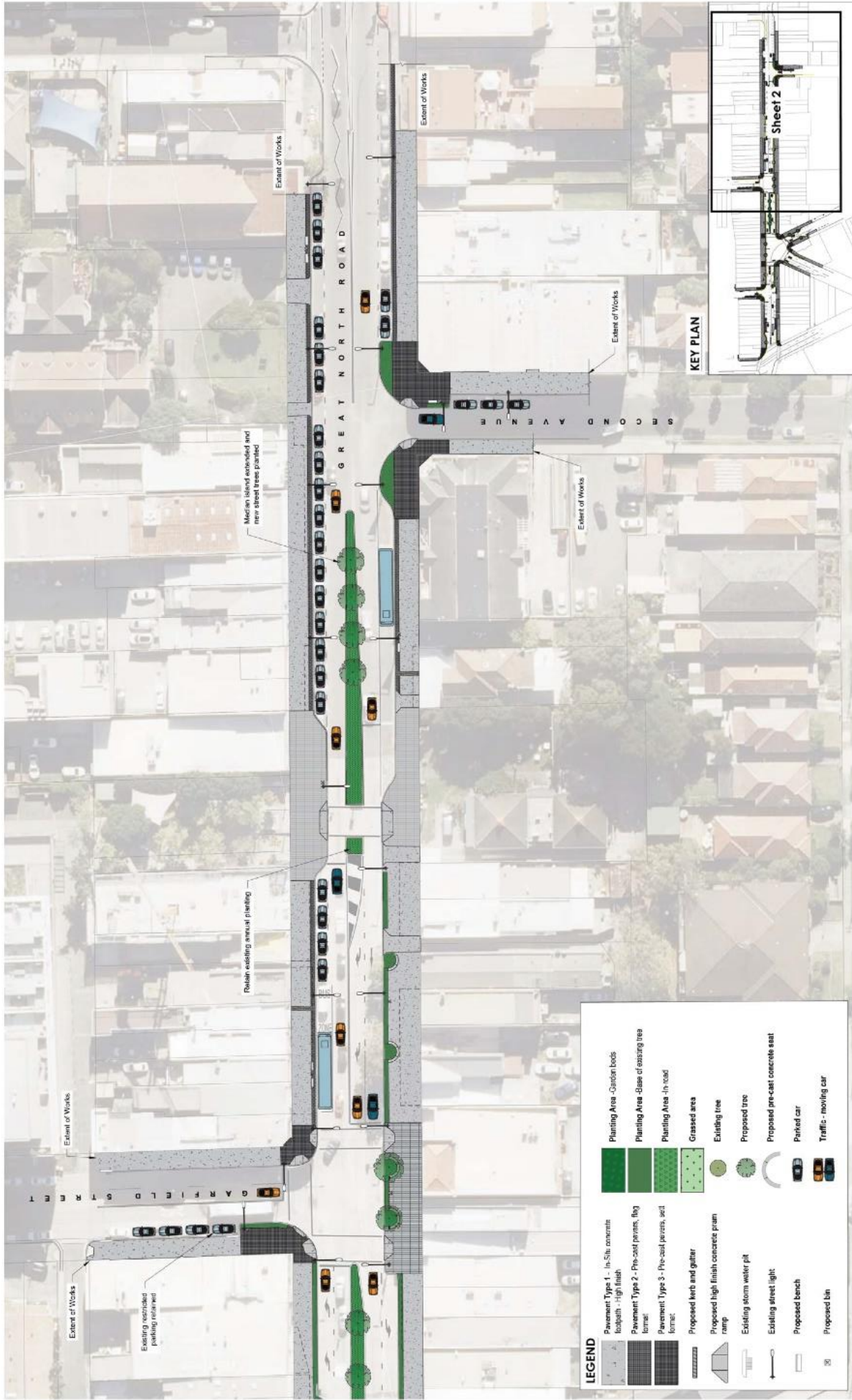
Visit: [www.fivedockupgrade.com](http://www.fivedockupgrade.com)



**LEGEND**

	Pavement Type 1 - In situ concrete		Planting Area - Green hoods
	Pavement Type 2 - Pre-cast pavers, flag finish		Planting Area - Blue (base of existing tree)
	Pavement Type 3 - 1/4" cast pavers, set back		Planting Area - 1/4" wood
	Proposed curb and gutter		Grassed area
	Proposed high finish concrete pump ramp		Existing tree
	Existing storm water pit		Proposed tree
	Existing street light		Proposed pre-cast concrete seat
	Proposed bench		Parked car
	Proposed bin		Traffic-moving car





**LEGEND**

Pavement Type 1 - In-Situ concrete footpath - high finish	Planting Area - Garden beds
Pavement Type 2 - Pre-cast perme. flag format	Planting Area - Base of existing tree
Pavement Type 3 - Pre-cast perme. seal format	Planting Area - In-road
Proposed kerb and gutter	Grassed area
Proposed high finish concrete pram ramp	Existing tree
Existing storm water pit	Proposed tree
Existing street light	Proposed pre-cast concrete seat
Proposed bench	Parked car
Proposed bin	Traffic - moving car

